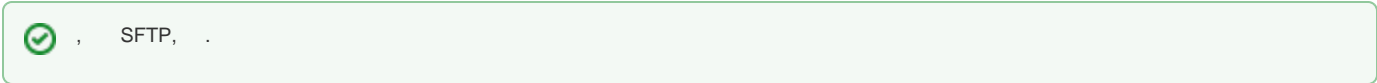


SSH Jelastic

[ssh] [SSH- Jelastic] [Windows] [MacOS X / Linux]

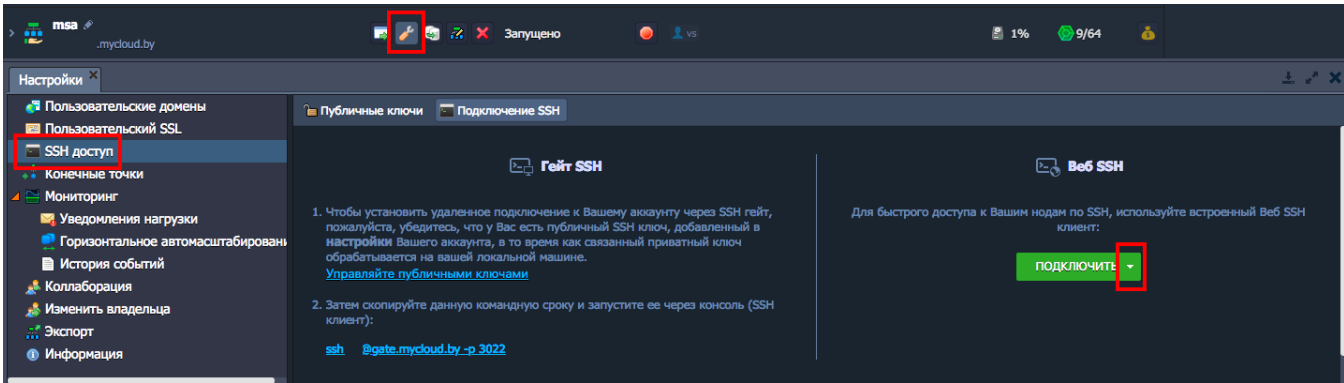
ssh , , dashboard.

ssh ssh- (). , .



ssh

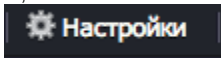
:



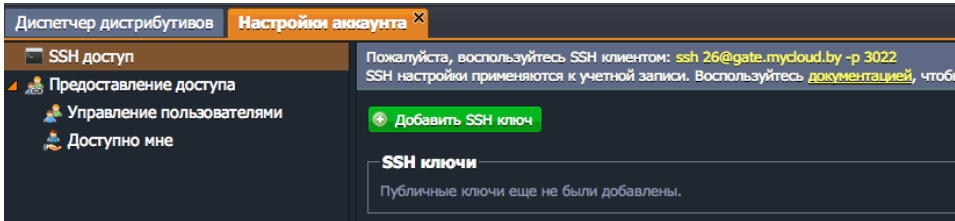
SSH- Jelastic

Jelastic , ().

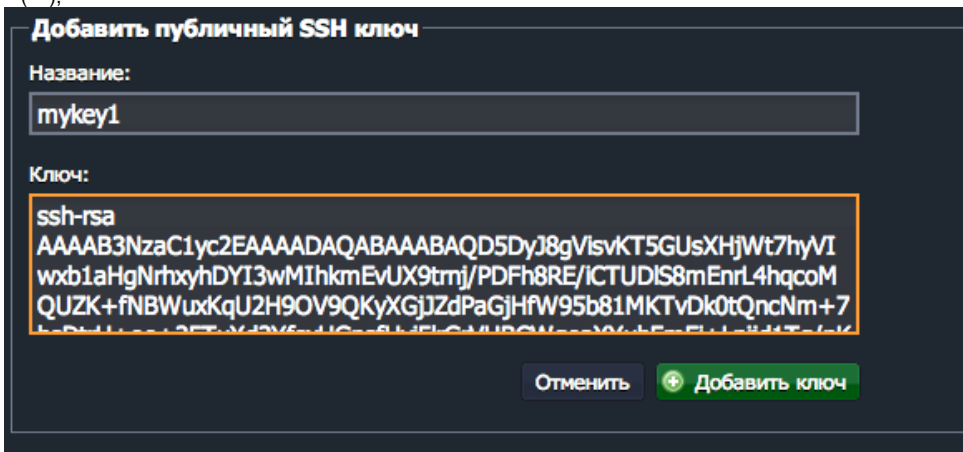
1. Jelastic@MyCloud.by
2. ,



3. " "



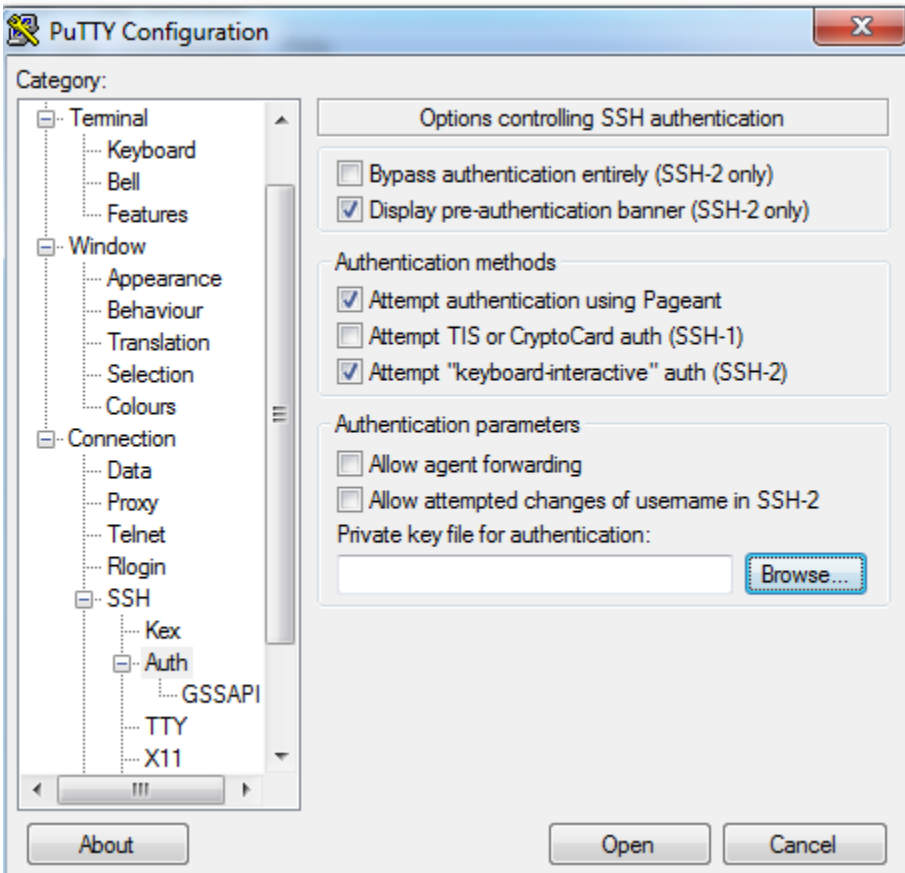
4. (), ""



Windows

ssh Windows Putty ()

"Connection" - "SSH" - "Auth"

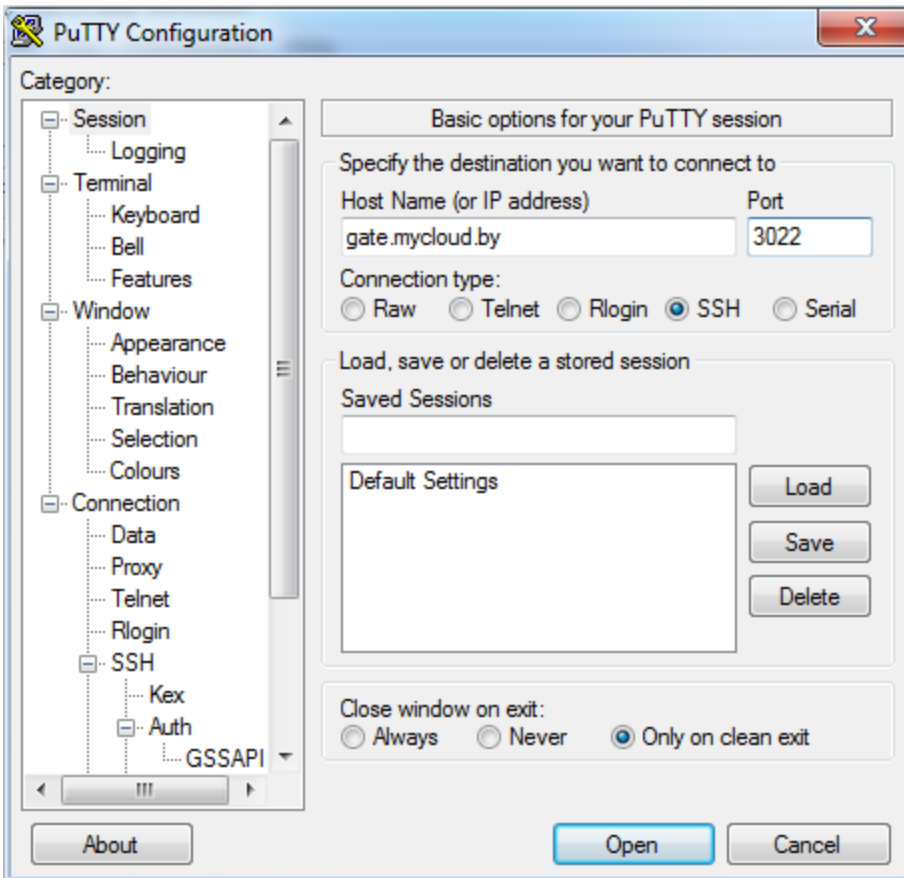


, Session :

Hostname: gate.mycloud.by

Port: 3022

"Open"



"@" (26)

Пожалуйста, воспользуйтесь SSH клиентом: `ssh 26@gate.mycloud.by -p 3022`
SSH настройки применяются к учетной записи. Воспользуйтесь [документацией](#), чтобы детальнее узнать о SSH доступе к окружениям.



```
Last login: Wed Feb 12 12:33:44 2014 from 82.207.55.226
Please select the required environment available for @jelastic.com
 1. env-1862168.jelastic.com Running
 2. env-3350004.jelastic.com Running
 3. env-5584156.jelastic.com Running
 4. env-9748785.jelastic.com Running
 6. Refresh
 7. Quit
Enter [1-7]: 1
```

```
Please select the required container provisioned for the 'env-1862168.jelastic.com' environment.
Node name          nodeid  LAN IP
1. MySQL-5.5.34    6481    192.168.2.97
2. Tomcat-7.0.47   6402    192.168.2.139
3. Refresh
4. Return to environment selection

Enter [1-4]: 2
```

, nodeid-userid, nodeid - , ,userid - , (-26). 6481-26

MacOS X / Linux

, Jelastic, :

Пожалуйста, воспользуйтесь SSH клиентом: [ssh 26@gate.mycloud.by -p 3022](ssh://26@gate.mycloud.by)
SSH настройки применяются к учетной записи. Воспользуйтесь [документацией](#), чтобы детальнее узнать о SSH доступе к окружениям.

, :

```
Last login: Wed Feb 12 12:33:44 2014 from 82.207.55.226
Please select the required environment available for @jelastic.com
1. env-1862168.jelastic.com Running
2. env-3350004.jelastic.com Running
3. env-5584156.jelastic.com Running
4. env-9748785.jelastic.com Running
6. Refresh
7. Quit

Enter [1-7]: 1
```

, , ,

, ,

```
Please select the required container provisioned for the 'env-1862168.jelastic.com' environment.
Node name          nodeid  LAN IP
1. MySQL-5.5.34    6481    192.168.2.97
2. Tomcat-7.0.47   6402    192.168.2.139
3. Refresh
4. Return to environment selection

Enter [1-4]: 2
```

, nodeid-userid, nodeid - , ,userid - , (-26). 6481-26